

# EDU-CHEM INNOVATIONS

THE ONE STOP SOURCE FOR ALL YOUR SCIENCE TEACHING AND RESEARCH NEEDS!

TOGETHER WITH

**FUN-SCI**

Visit us @ [WWW.FUN-SCI.COM](http://WWW.FUN-SCI.COM)  
"FUN-Science Academics" Group

Lab experiments included  
with most equipment.  
Only from Edu-Chem!

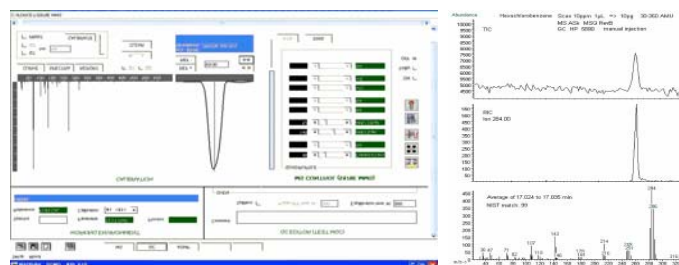
## GAS CHROMATOGRAPH/MASS SPECTROPHOTOMETER (GC-MS)

**EDU-CHEM Innovations is proud to introduce the EDU-5100-GCMS**, a completely integrated Gas Chromatograph-Mass Spectrometer System (GC-MS) with a Mass range **>200 AMU** and **~1 PPM** sensitivity for most organics! The compact construction of the AddMS-4500 MSD module incorporates a high resolution quadrupole probe with a reliable 2-filament Electron Ionization Source (EI) and an exceedingly stable Electron Multiplier Detector **to >400 AMU, expandable to >450 AMU for high-MW materials! Future enhancement to >600 AMU for selective Petrochemical and Research applications.**

Combining the expertise of Engineers from companies you've heard of, such as Perkin Elmer & Hewlett Packard, the ECI-5100-GCMS joins the **PC-2100 GC (from Per-Chrom Instruments) configured with either a High Sensitivity Micro TCD Detector or an FID Detector** and the uniquely designed, compact AddMS 4500 MS Detector (from Acquisition Solutions K of Texas). Fully controlled and easily operated with the user friendly MStation Software! Now it's possible for **YOUR School** to do lab projects with organic synthesis, perform research in catalysts and reactions, and work on trace environmental samples... ANYTHING where the power of structural elucidation & sensitivity associated with GCMS can be used. The EDU-5100-GCMS System is priced for Schools at **UNDER \$39,000**. We are able to provide a **NEW Instrument with 2 Year Warranty and Toll Free Support for Service & Application assistance...** at **HALF** the cost of **USED GCMS Instruments found on the market!** Get **MORE GCMS....** for a whole **LOT LESS!!**



Hardware **CONTROL** and **DATA Management** (Auto/Manual-Tuning, Auto-Mass Calibration, Peak Identification, etc) through the 1-Screen MStation™ Software makes it **EASY** for **ALL** your **Students & Staff** to operate the EDU-5100-GC-MS.



**INCLUDES COMPLETE SET OF FUN-Scienc™ EXPERIMENTS & 24/7 TECHNICAL SUPPORT (ONLY AVAILABLE THROUGH EDU-CHEM)**

### EDU-5100-GC-MS SPECIFICATIONS

#### DPS-600 GC MODULE

- Dimensions: 16"Wx18"Dx18"H
- Weight: 52 pounds
- Connection Services: He Carrier, 110V / 20A Electrical,
- P-C (W-XP O/S, 666Mhz, 9-pin Serial Port, 516M RAM min)

#### ADDMS-4500 MS DETECTOR

- Dimensions: 9"Wx20"Dx12"H
- Weight: 55 pounds (w/ Diffusion Pump)
- Connection Services: 110V / 5A Electrical,
- P-C (W-XP O/S, 666Mhz, 9-pin Serial Port, 516M RAM min)
- OPT: Roughing Pump